

# Circuit Diagram

Feeder  
DADF-Q1

**Canon**



## IMPORTANT

This documentation is published by Canon Inc., Japan, to serve as a source of reference for work in the field.

Specifications and other information contained herein may vary slightly from actual machine values or those found in advertising and other printed matter.

Any questions regarding the information contained herein should be directed to the Copier Service Department of the Sales Company.

This documentation is intended for all sales areas, and may contain information not applicable to certain areas.

Reproduction without permission not allowed.

Use of this manual should be strictly supervised to avoid disclosure of confidential information.

***COPYRIGHT 2001 CANON INC.***

*Printed in Japan*

### Caution

Use of this manual should be strictly supervised to avoid disclosure of confidential information.

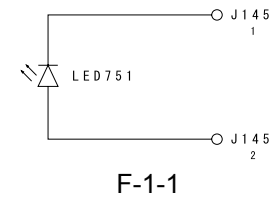


## Contents

1 Paper Sensor PCB.....	1
Luminescence PCB.....	1
Phototransistor PCB.....	1
2 Tray PCB.....	3
Tray PCB.....	3
3 Original Set Indication PCB.....	5
Original Set Indication PCB.....	5

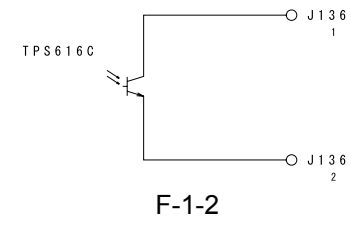


1 Paper Sensor PCB  
Luminescence PCB



F-1-1

Phototransistor PCB

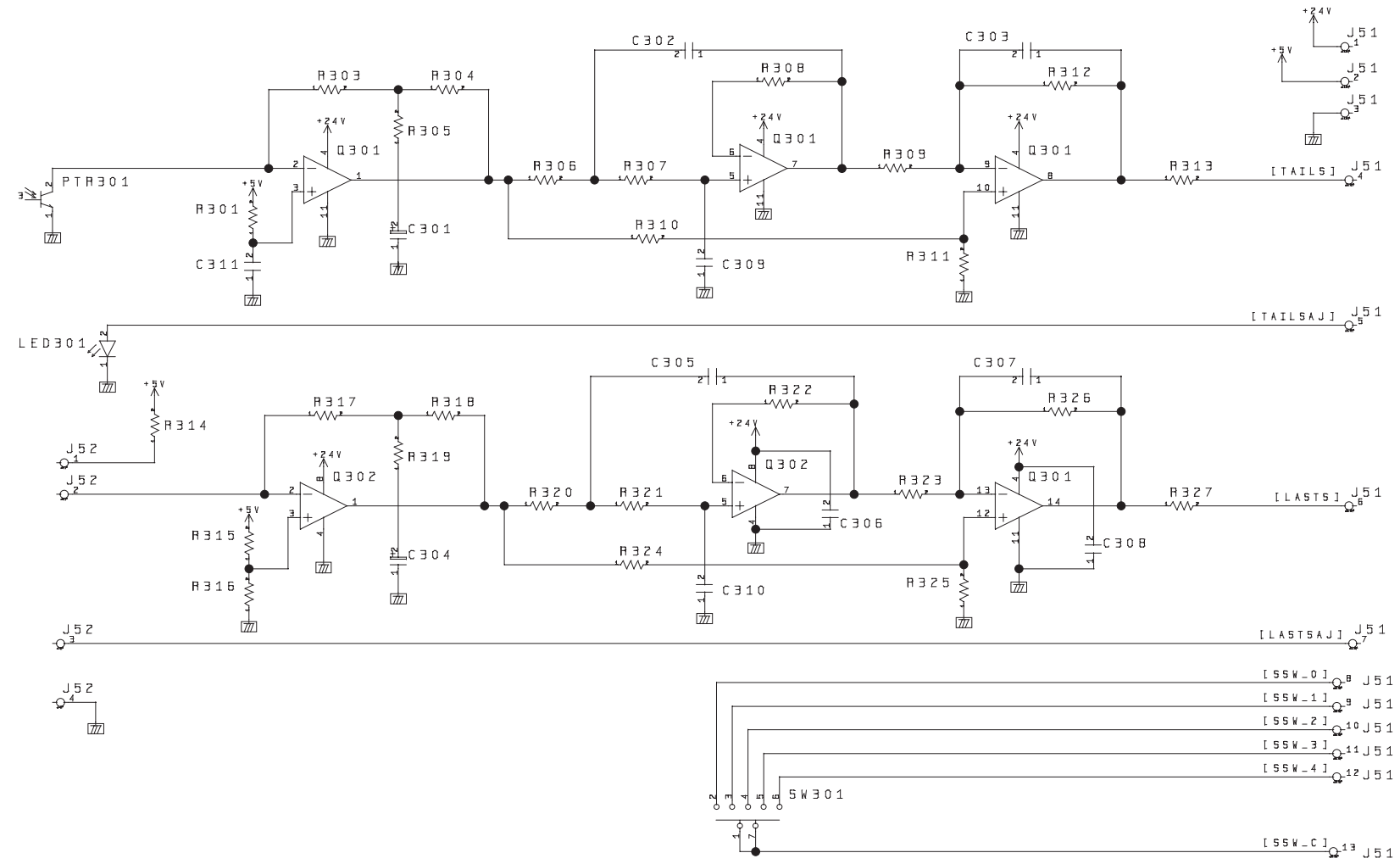


F-1-2





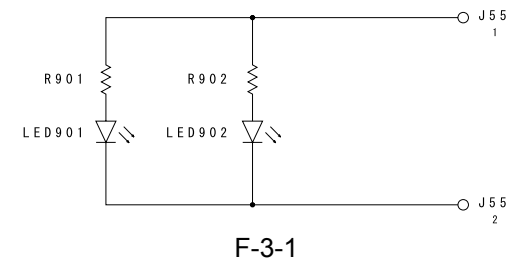
2 Tray PCB  
Tray PCB



F-2-1



3 Original Set Indication PCB  
Original Set Indication PCB





Feb 7 2006

**Canon**